

Webinar: Innovating with Open Government Data

Monday, March 16, 2020
4:30 - 5:30 p.m.



DATA COALITION

Who We Are

- The Data Coalition is America's premier voice on data policy.
- A **membership-based** business association.
- We advocate for responsible policies to make government data high-quality, accessible, and useable.



Presenters



Amy Edwards

Deputy Assistant Secretary,
Accounting Policy & Financial
Transparency Office of the
Fiscal Assistant Secretary,
Department of the Treasury



Nick Hart

CEO, Data Coalition



**Rebecca
Hutchinson**

Big Data Lead, Census
Bureau, Department of
Commerce



Neil Jacobs

Acting Administrator,
National Oceanic and
Atmospheric
Administration



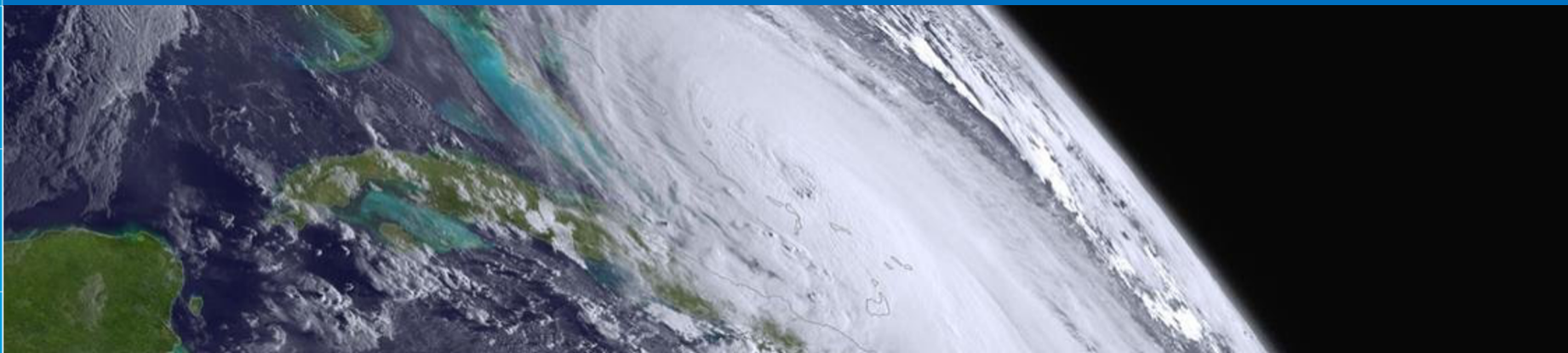
NOAA



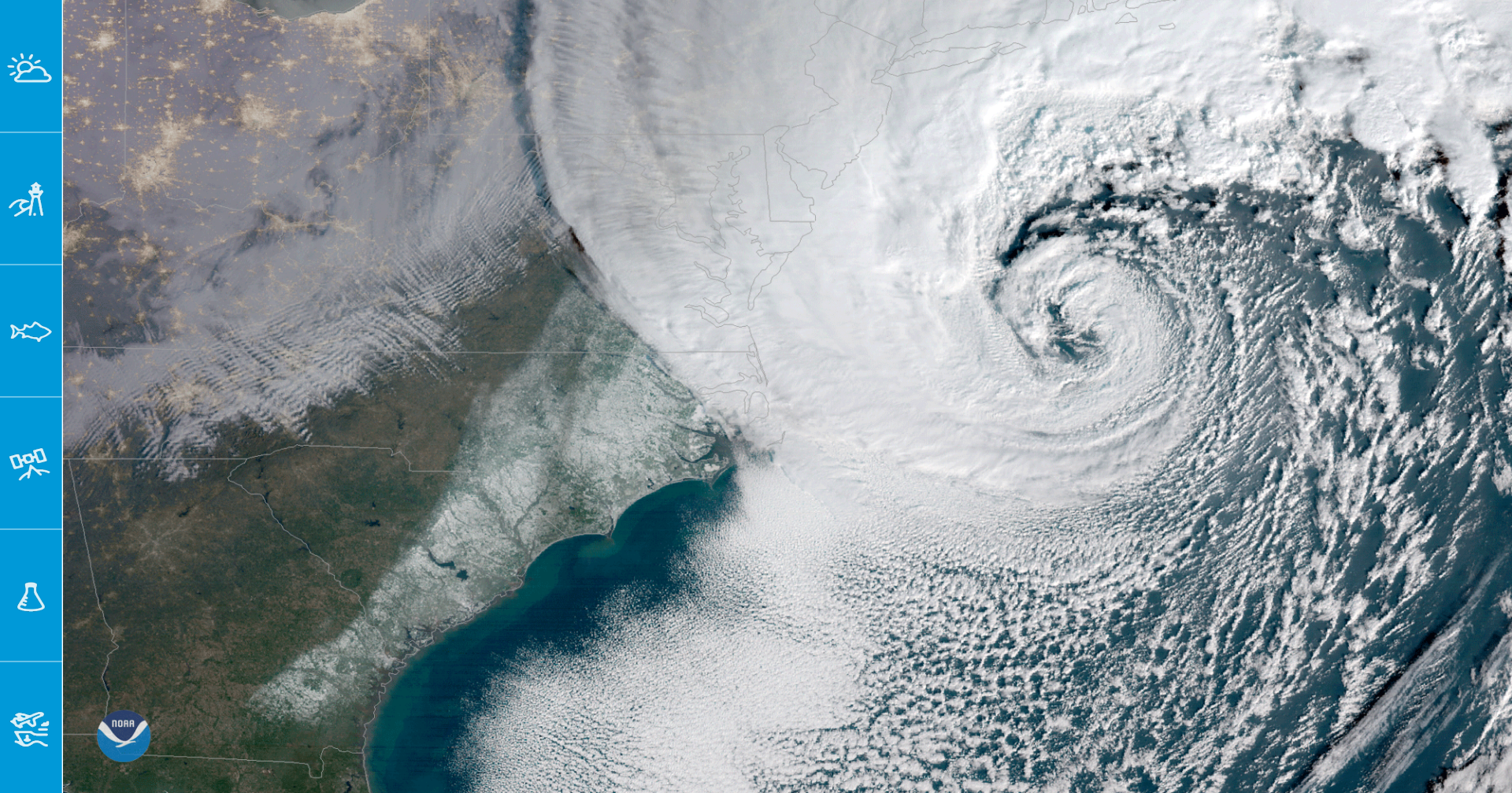
Innovating with Open Government Data

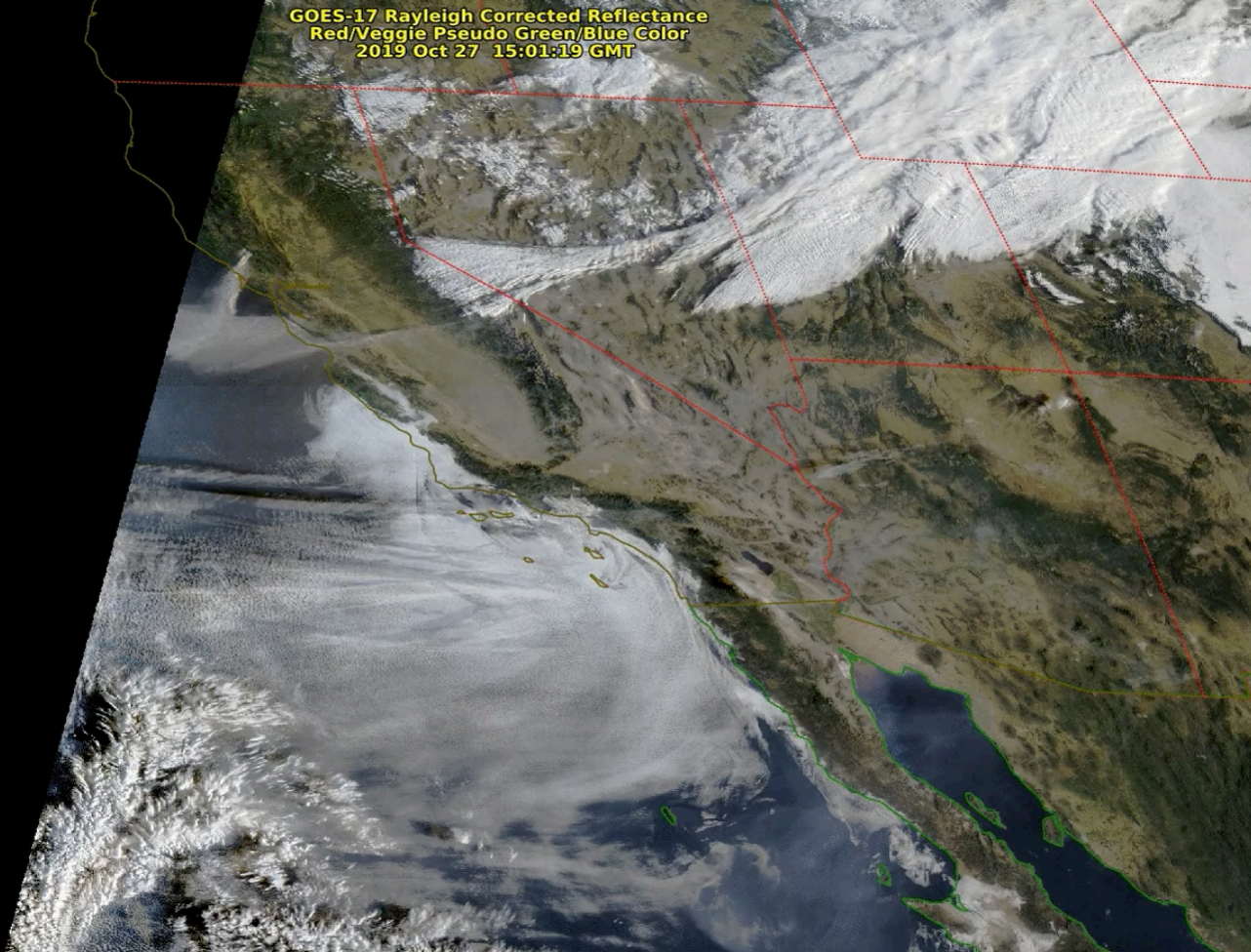
Neil Jacobs, Ph.D.

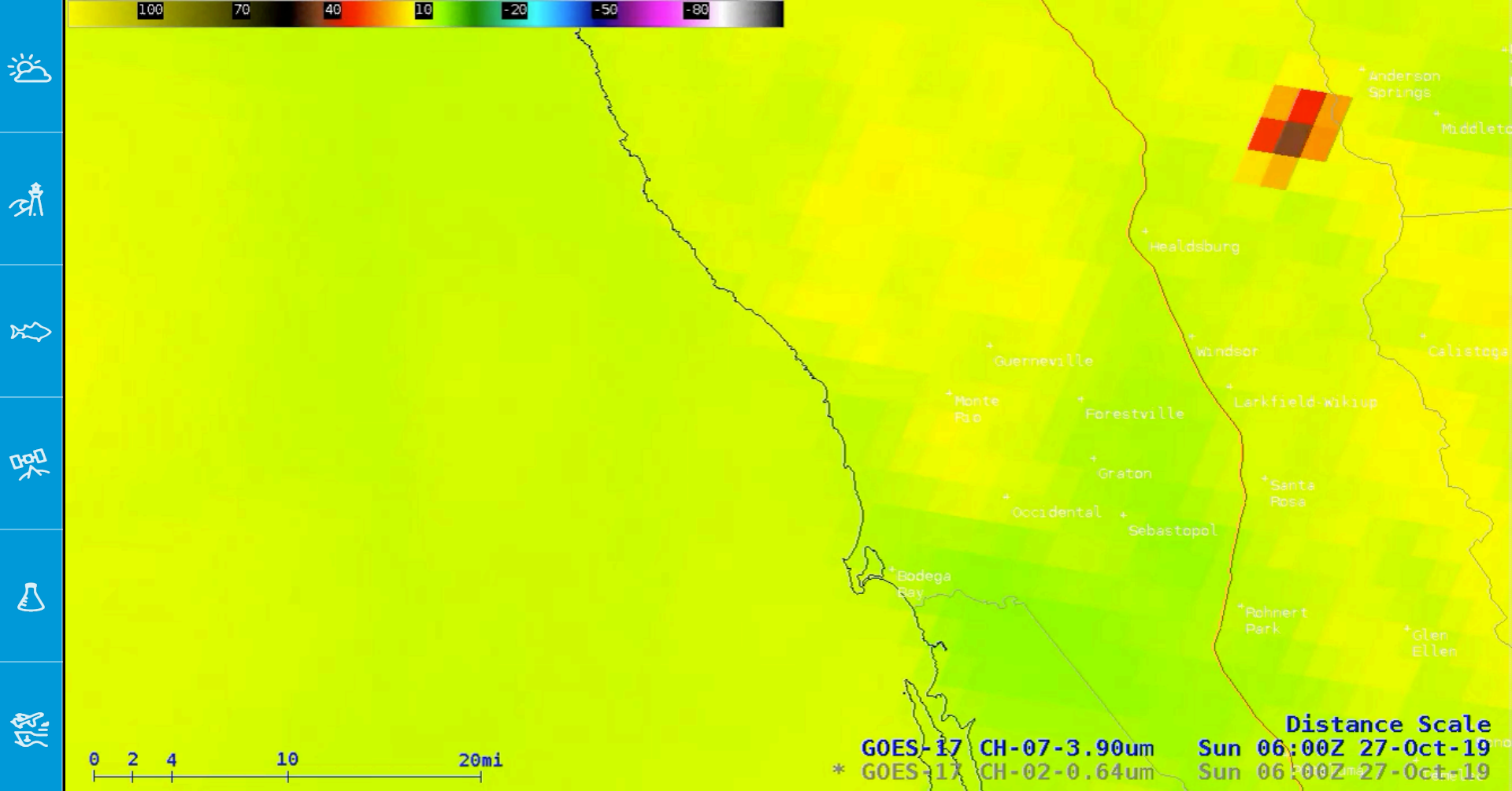
Assistant Secretary of Commerce for Environmental Observation and Prediction
Performing the duties of Under Secretary of Commerce of Oceans and Atmospheres

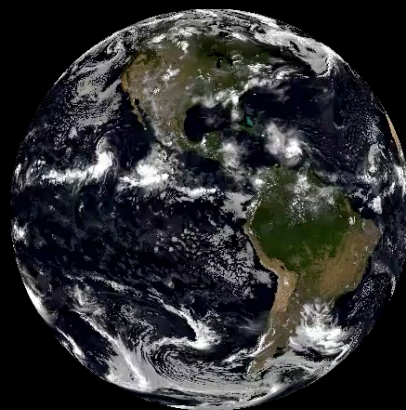












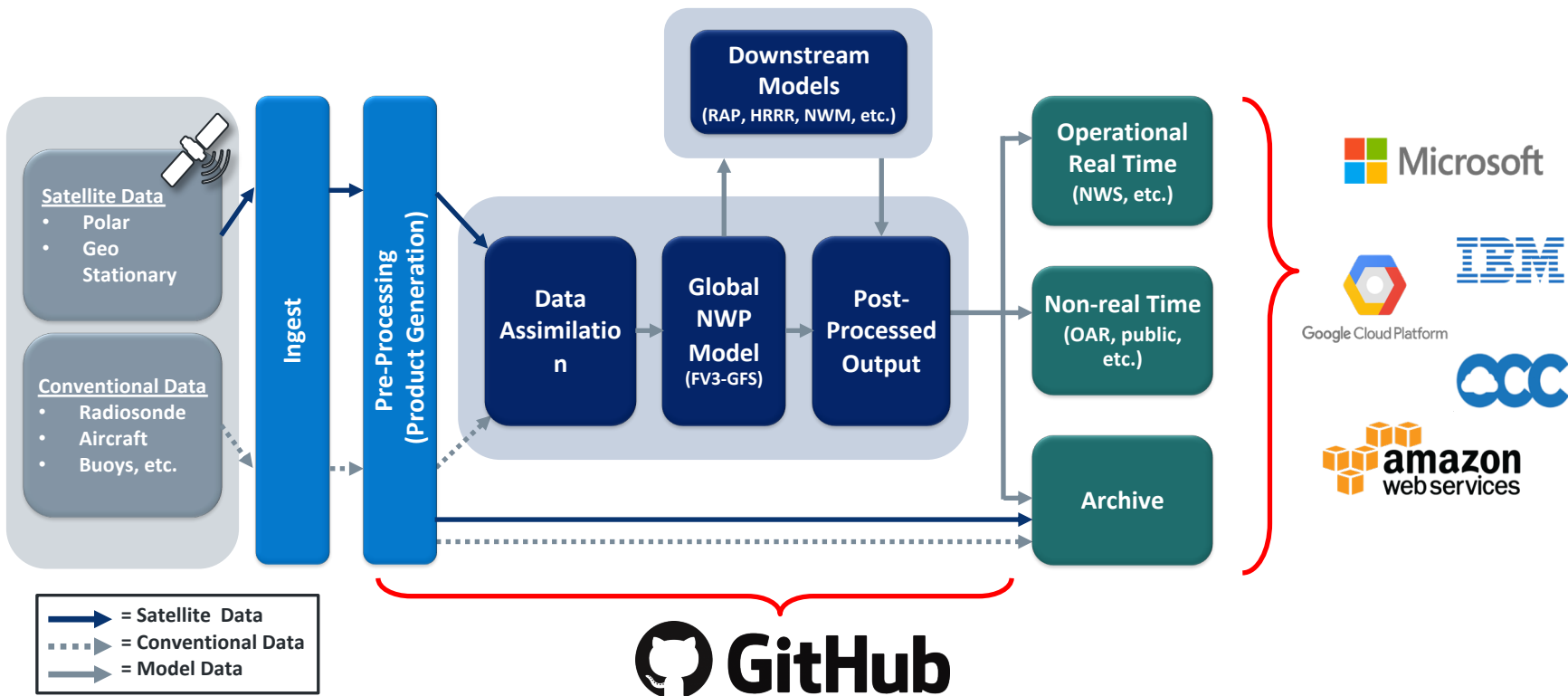
2016-08-01 01:00Z
001 Forecast Hours
FV3 3km

Visualization
Xi Chen@FV3 team







Data Processing, Storage, and Open Access





 Search or jump to... Pull requests Issues Marketplace Explore



Unified Forecast System (UFS)

The Unified Forecast System (UFS) is a community-based, coupled, comprehensive...

<https://ufscommunity.org/>

Repositories 8

Packages People Projects

Type: All Language: All

ufs-s2s-model

UFS sub-seasonal to seasonal forecast model

Makefile 18 2 24 2 Updated 2 days ago

ufs-weather-model

UFS Weather Model

C 53 21 5 5 Updated 3 days ago

ufs-srweather-app

UFS Short-Range Weather Application

Python 0 0 0 0 Updated 4 days ago

ufs-mrweather-app


UFS Medium-Range Weather Application

Python 7 14 4 0 Updated 5 days ago

ufs-hafs-model

UFS High-Resolution Forecast System

C 1 1 0 0 Updated on Dec 2, 2019

 Search or jump to... Pull requests Issues Marketplace Explore

[ufs-community / ufs-weather-model](#)

Watch 39 Star 21 Fork 53

<> Code Issues 5 Pull requests 5 Actions Projects 0 Wiki Security Insights

Home

ceceliad edited this page 8 days ago · 97 revisions

Welcome to the UFS Weather Model wiki!

The ufs-weather-model repository contains the model code and external links needed to build the Unified Forecast System (UFS) atmosphere model and associated components, including the WaveWatch III model. This weather model is used in several of the UFS applications, including the medium-range weather application and the short-range weather application.

This wiki includes a [Getting Started](#) section that leads you through a quick example. It also includes a [Graduate Student Test](#) based on that example. The Graduate Student Test is a way for students, postdocs and others to provide feedback on the usability of the code by running through a series of experiments and then filling out a questionnaire about the experience.

Documentation and User Support

The UFS Weather Model User's Guide has more comprehensive information than this wiki, including links to scientific descriptions of the code and more thorough technical instructions.

Depending on what you are doing, you may need different versions of the User's Guide:

Version	Description
Tag ufs-v1.0.0	Documentation for the most recent release and the version currently used in the Getting Started section and Graduate Student Test .
Latest	Documentation for the head of the development. This may have gaps and errors.

You can also get expert help through a user support forum set up specifically for the UFS Weather

Home

- [Creating a GitHub Account for Development Work](#)
- [Getting Started](#)
 - [1 Download the Code](#)
 - [2 Compile the Model](#)
 - [3 Download a Test Case](#)
 - [4 Run the Test Case](#)
 - [5 Check Your Results](#)
- [Graduate Student Test: Weather Model CCN Experiment](#)
- [Developer Information](#)
 - [Announcements](#)
 - [Commit Queue](#)
 - [Monthly Commit Summaries](#)
- [Regression Test Policy for Weather Model](#)



JCSDA development





Google





VisGUI View 2.0.0-master

File View Display Playback Tools Help

Fast Backward Reverse Previous Frame Pause Next Frame Play Fast Forward

All Events Event Filter Show Full Volume Loop Playback Create Track Create Event Create Scene Element Auto Edit Mode Normancy Anomaly Execute Process Low Context Detail High Auto Update

Track

ID: 4226

Type: None

Type Color:

Normalcy: 1

Start: 00:00:00.000 (69)

End: 00:00:00.000 (69)

Classifiers:

Type	Score
Red_Grouper	0.115865

Time View

Activities Events Tracks Scene Elements

- Red_Grouper-3953
- Blue_Angelfish-3954
- Slippery_Dick-3960
- Red_Grouper-3971
- PTEROIS-168011900-3978
- Grey_Snapper-3982
- Grey_Snapper-3986
- PTEROIS-168011900-3991
- Grey_Snapper-3996
- Blue_Angelfish-4000
- Grey_Snapper-4015
- Grey_Snapper-4030
- Scamp-4033
- Grey_Snapper-4036
- Blue_Angelfish-4037
- Red_Grouper-4040
- Slippery_Dick-4055
- Red_Grouper-4063
- PTEROIS-168011900-4072
- Scamp-4076
- Scamp-4077
- Grey_Snapper-4082
- PTEROIS-168011900-4085
- Grey_Snapper-4087
- Blue_Angelfish-4091
- Red_Grouper-4092
- Grey_Snapper-4103
- Slippery_Dick-4109
- Blue_Angelfish-4116
- Slippery_Dick-4118
- Grey_Snapper-4121
- Grey_Snapper-4123
- Red_Grouper-4128
- Grey_Snapper-4137
- Blue_Angelfish-4142
- Red_Grouper-4152
- PTEROIS-168011900-4162
- Scamp-4168
- Scamp-4169
- Scamp-4170
- Grey_Snapper-4171

Sort By Id Descending

Show All Hide All

Show Undeleted Show Excluded

P Min Frame 69 772, 89

69 / 984

00:00:34.000 0 activities 0 events 59981 tracks

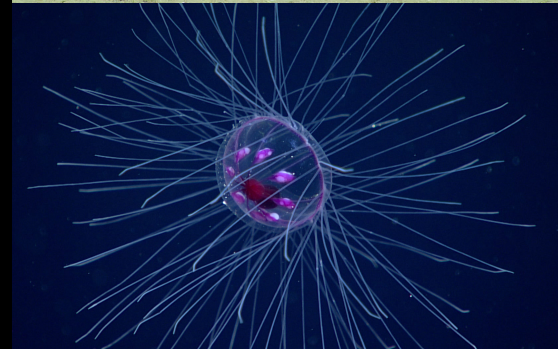
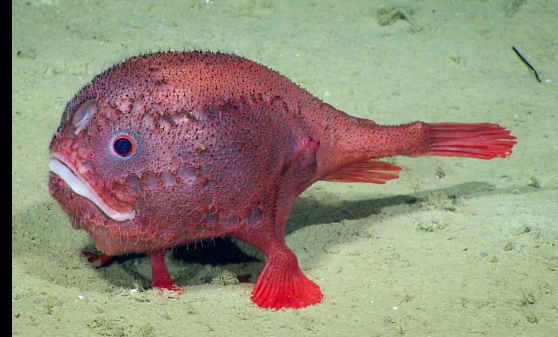
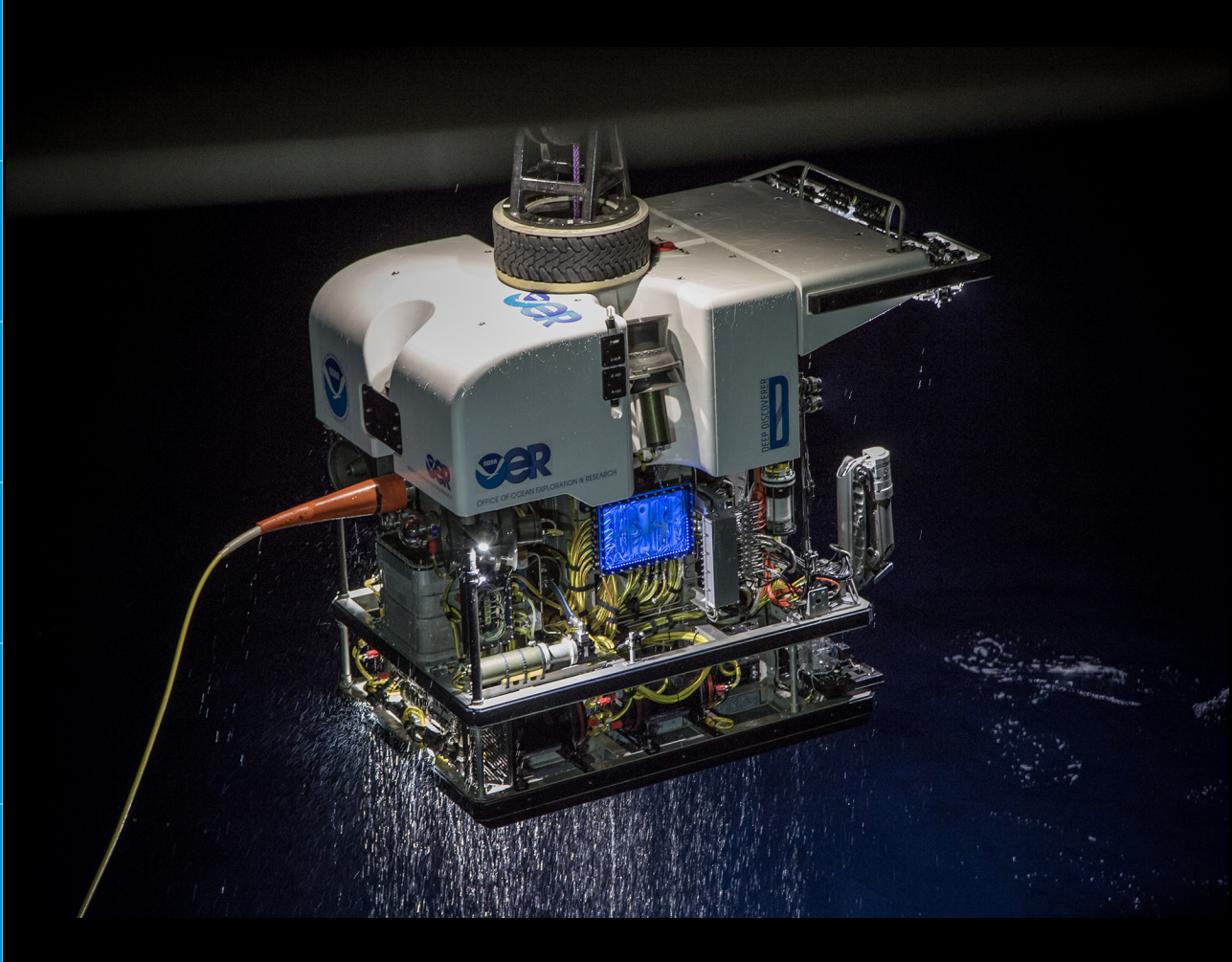
Tracks

Track	Value	Invert
Grey_Snapper	0.52	Invert
Blue_Angelfish	0.20	Invert
Calanus	0.83	Invert
Red_Grouper	0.10	Invert
Scamp	0.18	Invert
Red_Snapper	0.18	Invert
PTEROIS-168011900	0.00	Invert
Red_Porgy	0.20	Invert
Slippery_Dick	0.15	Invert
Reef_Butterflyfish	0.12	Invert

Events

Activities

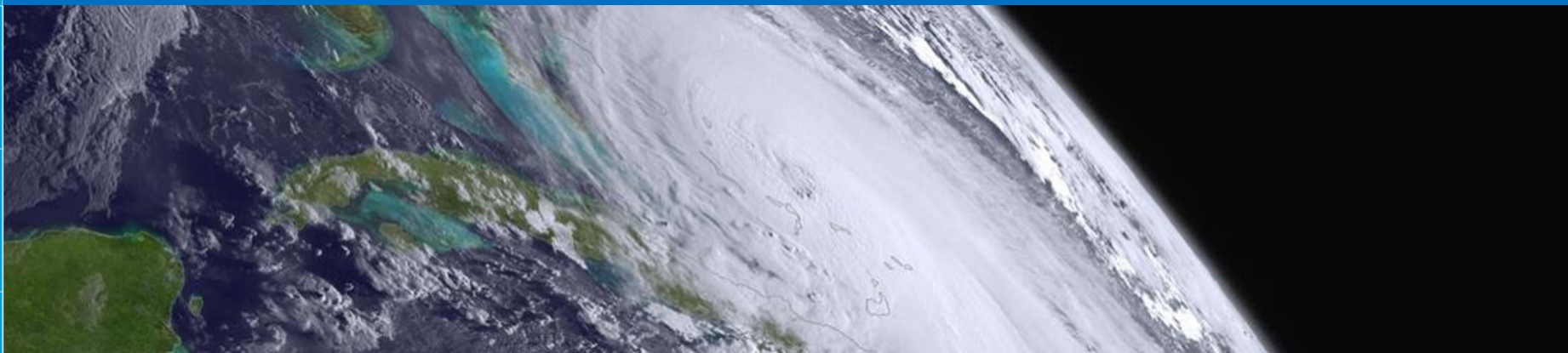






NOAA

Thank You!



New, Innovative, and Ready for Feedback: Experimental Data Products

Rebecca Hutchinson

United States Census Bureau

March 16, 2020

*Disclaimer: Any views expressed are those of the author
and not necessarily those of the United States Census Bureau.*

Shape
your future
START HERE >

United States[®]
Census
2020

What are Experimental Data Products?



- Provide data users with more timely and relevant data
- Created using new data sources and/or methodologies
- Provide a benefit to data users in the absence of other available data
- Benefit from feedback from data users
- May not meet all Census Bureau quality standards

What Experimental Data Products are currently available?

- **Business Formation Statistics**
- **Dispersion Statistics on Productivity**
- **Post-Secondary Employment Outcomes (PSEO)**
- **Supplemental Quarterly E-Commerce Table**

Experimental Data Products?

The screenshot shows the United States Census Bureau website. At the top is a dark blue navigation bar with the 'United States Census Bureau' logo on the left and a search bar on the right. Below the navigation bar is a horizontal menu with links: 'BROWSE BY TOPIC', 'EXPLORE DATA', 'LIBRARY', 'SURVEYS/ PROGRAMS', 'INFORMATION FOR...', 'FIND A CODE', and 'ABOUT US'. An orange banner across the page reads 'American FactFinder retires March 31: Data Dissemination transitions to data.census.gov.' Below this is a large blue banner with a data visualization background (bar and line charts) and the text 'Experimental Data Products'. The main content area has the title 'What are Experimental Data Products?' and a date 'NOVEMBER 04, 2019'. The text explains that experimental data products are innovative statistical products created using new data sources or methodologies that benefit data users in the absence of other relevant products. It also mentions that the development of experimental data is an important path towards the creation of new, regularly occurring statistical products. A small icon for 'EXPERIMENTAL DATA' is shown. At the bottom right, there is a small feedback box asking 'Is this page helpful?' with 'Yes' and 'No' buttons.

United States Census Bureau

Search

BROWSE BY TOPIC EXPLORE DATA LIBRARY SURVEYS/ PROGRAMS INFORMATION FOR... FIND A CODE ABOUT US

American FactFinder retires March 31: Data Dissemination transitions to data.census.gov.

Experimental Data Products

What are Experimental Data Products?

NOVEMBER 04, 2019

Experimental data products are innovative statistical products created using new data sources or methodologies that benefit data users in the absence of other relevant products. We are seeking feedback from data users and stakeholders on the quality and usefulness of these new products.

The development of experimental data is one important path towards the creation of new, regularly occurring statistical products. Experimental data products that meet our quality standards and demonstrate sufficient user demand may enter regular production if resources permit.

Census Bureau experimental data may not meet all of our quality standards. Because of this, we clearly identify experimental data products and include methodology and supporting research with their release.

EXPERIMENTAL DATA

Is this page helpful? Yes No

<https://www.census.gov/data/experimental-data-products.html>

How do I provide feedback?

Census.Experimental.Data@census.gov

Experiment Data Product in Action: Business Formation Statistics (BFS)

Shape
your future
START HERE >

United States[®]
Census
2020

Overview of BFS

- Provides quarterly data on business applications and business formations nationwide and by state, released 2 weeks after the close of a quarter
- Fills a gap in the availability of high frequency, timely data on new business formation in the U.S.
 - Available data products measuring new business activity typically come with a lag
 - For example, Census Bureau's Business Dynamics Statistics (BDS) offers annual information on business entry with a 2-year lag
 - BFS focuses on measuring early-stage business activity with shorter lag and with more frequent updates
- New experimental, public-use data product
- Uses only EIN Application Form (SS-4) data from the IRS

Origins of BFS

Began as a Center for Economic Studies (CES) research collaboration with

- Board of Governors of the Federal Reserve System
- Federal Reserve Bank of Atlanta
- University of Maryland
- University of Notre Dame

First Published as Experimental Data Product on July 17, 2019

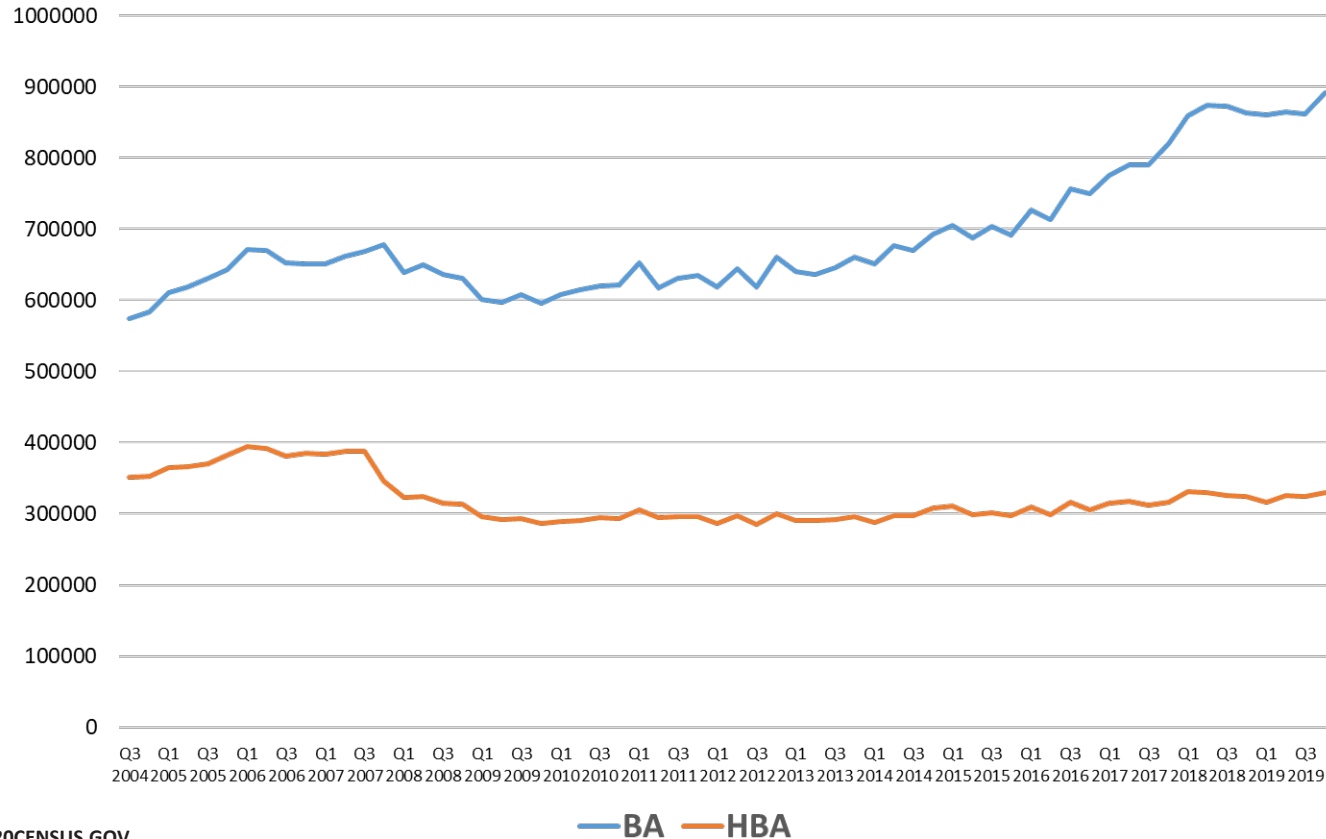


Business Application Series

Business Applications – The number of applications for an Employer Identification number (EIN) with the Internal Revenue Service (IRS).

- **Business Applications (BA) - The core series that excludes all EIN applications in the U.S. that are not filed with a business intent:**
 - Trusts, estates, tax-liens
 - Public entities
 - Some other filings with little or no business intent (e.g. personal tax/finance related filings, etc.)
- **High-Propensity Business Applications (HBA): Applications that have a relatively high likelihood of becoming employer businesses**
 - From corporate entities
 - Indicate hiring employees, purchasing a business or changing organizational type
 - Provide a date for first-wages paid/planned
 - In manufacturing, retail, health care and restaurants/food service

Business Applications (BA) and High-Propensity Business Applications (HBA), 2004q3-2019q4

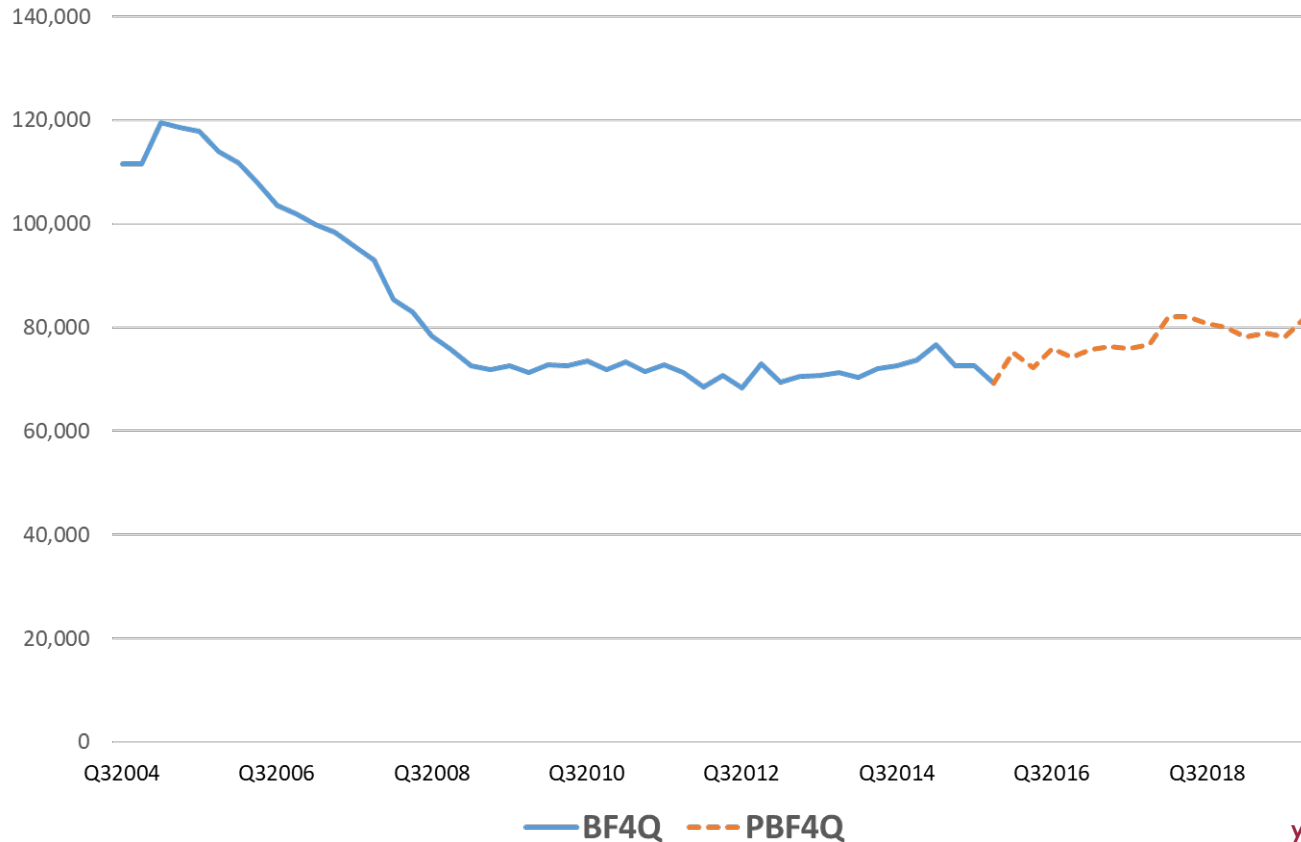


Business Formation Series

Use Census Bureau's Longitudinal Business Database (LBD) to identify new employer firm (EIN) births from business applications and the timing (quarter) of these births

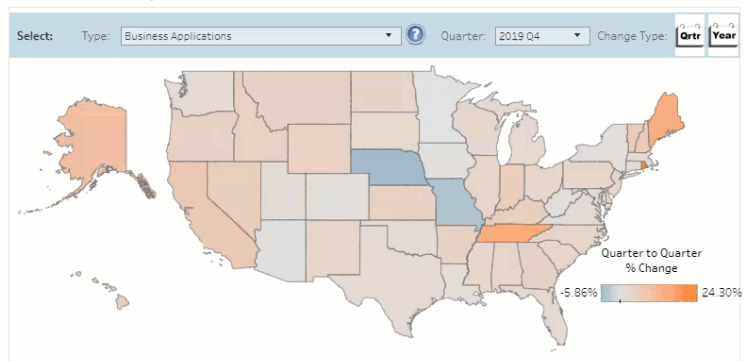
- **Business Formations within 4 Quarters (BF4Q):**
 - Employer businesses that originate from Business Applications (BA) within a four quarter window from the quarter of application
- **Projected Business Formations within 4 Quarters (PBF4Q):**
 - Projected employer businesses that originate from Business Applications (BA) within a four quarter window from the quarter of application
 - Provides estimates for the quarters for which actuals are not yet available
- **All series are also provided for an 8-quarter window (BF8Q, PBF8Q, SBF8Q, DUR8Q)**

Business Formations within 4 Quarters, Actual (BF4Q) and Projected (PBF4Q), 2004q3-2019q4

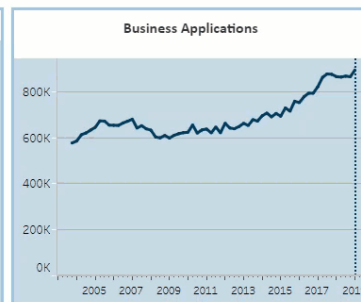
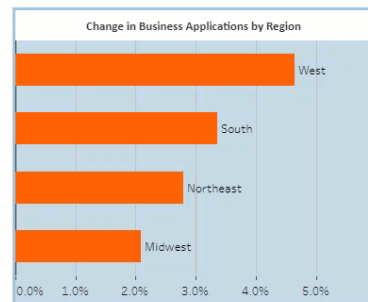


Business Applications

Quarter-to-Quarter Change From 2019 Q3 to 2019 Q4
(Seasonally Adjusted)



Overall, the U.S. received 891,286 Business Applications in 2019 Q4. This was a 3.4% increase from the prior quarter.



United States[®]
Census
Bureau

U.S. Department of Commerce
U.S. CENSUS BUREAU
census.gov

Source: Business Formation Statistics

What's next for BFS?

Pursuing Economic Indicator Designation from OMB

Publishing Potential New Series

- More granular geography (county, MSA)
- Industry series (broad NAICS sectors)
- Higher frequency series (monthly, weekly)

Questions?

Rebecca Hutchinson

rebecca.j.Hutchinson@census.gov

A photograph of the Alexander Hamilton statue in front of the U.S. Treasury Department building. The statue is a dark bronze figure of a man in 18th-century attire, standing on a stone pedestal. The building behind it is a grand neoclassical structure with large columns and windows. The image is partially obscured by white diagonal geometric shapes.

Expanding Financial Transparency and Open Data




USING DATA AS A STRATEGIC ASSET

1. Understand data users needs.
2. Begin with specific use cases.
3. Provide simple access to data and visualizations.
 - *What key management challenges can data inform?*
 - *What key questions can data answer?*




UNDERSTAND DATA USERS NEEDS



THE CFO

Data Reviewer

Name: Shane Robledo Age: 42 Occupation: Deputy CFO, Agency Location: Downtown & telework from Silver Spring



THE CITIZEN

Data Consumer

Name: Manny LeCroix Age: 74 Occupation: Retired Press Tech for the New Orleans Advocate Location: Metairie, LA

Manny is a news junkie who worked his entire career operating the printing press at the New Orleans Advocate. He is currently retired. He and his wife, Sylvia, read the newspaper from front to back and listen to news radio every day. They have 3 grandchildren.

“ When I want to know more about a story I’ve seen in the news, I look for articles from sources that I trust. ”

Goals & Tasks

- Identifies and corrects error to improve data quality
- Reconciles data from general ledger
- Ensures agency compliance with laws
- Gains real-time insights into cash flow
- May also be a Data Creator

Goals & Tasks

- Uses Google to search for more information about news stories of interest
- Wants to be an informed citizen, taxpayer, and voter
- Wants a general sense of how the government spends its money

Attitudes & Motivations

- Loves to read news and non-fiction and talk about the news and politics
- Walks to his local coffee shop each afternoon and talks with friends over coffee and lunch. Loves to have good information to fuel his debates

Pain Points




- If information does not turn up in a Google search, he won't find it
- Homepage is disorienting—not sure what to do
- Data is overwhelming and lacks a "story"
- Manny does not have the background to interpret the financial data on USASpending


Skills

Financial

Technological

Tools

Computer  +  

Phone 





Use Case:
How much does the federal government
spend in a day?





Use Case:

How much funding does my Alma Mater receive
from the federal government?

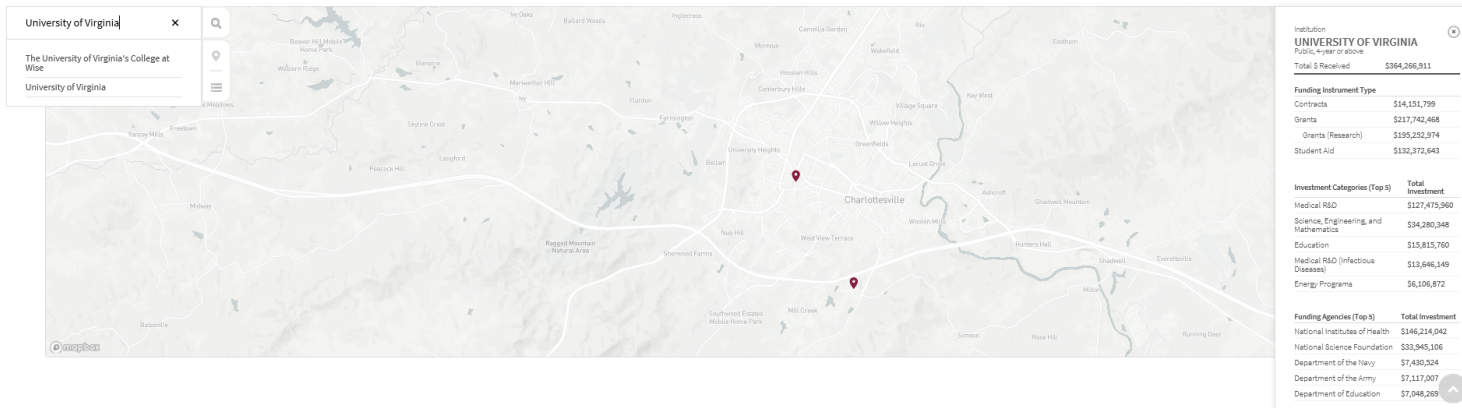
02

MY ALMA MATER

Find how much your Alma Mater
received in federal funds.

The federal government may have invested in your college or university, whether it is public, private, four-year, or two-year. Use the map below to uncover the amount and type of investment for individual schools. Click on a regional cluster to expand the area and see the schools in that area.

Instructions


[Refresh Map](#)
[Share](#)




Use Case:

How many people are homeless in DC on a single night?

How many beds are available?



Number of People Experiencing Homelessness

People experiencing homelessness on a single night in January in this cluster

169,971 people

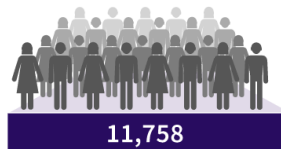


39.6% are
in families

60.4% are
individuals

Population Density

Number of people per square mile in this cluster



Total Population

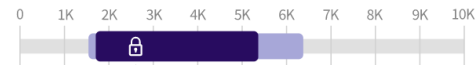
Total population in this cluster



CLUSTER MEDIAN: 56

Property Crime Rate

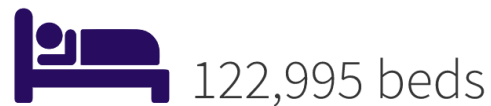
Range of property crime incidents per 100K people for areas within this cluster



CLUSTER MEDIAN: 2,630

Beds Available

Total sheltered and permanent beds available within this cluster



In 2018, the government spent **\$4.11 trillion**.¹

USA Spending tracks federal spending to ensure taxpayers can see how their money is being used in communities across America. Learn more on how this money was spent with tools to help you navigate spending from top to bottom.



FEATURED CONTENT

New! - Daily Treasury Statement Tracker

Explore how much money the federal government spends each day, month, and fiscal year using an interactive tool that visualizes the Daily Treasury Statement.

[Explore the Data](#)

New! - Download Account Data

Download account data at the Federal Account or Treasury Account level, including account data linked to award data.

[Download Account Data](#)

New! - Recipient Profiles

Find insights into each recipient with the tools and summaries found in our new Recipient Profile pages.

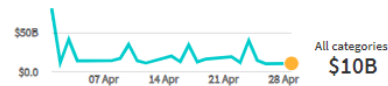
[Explore Recipient Profiles](#)



Your Guide to America's Finances

VISUALIZING THE DAILY TREASURY STATEMENT

How much does the federal government spend each day?



Updated April 29, 2019

Contract Spending Analysis

How has federal contract spending changed over time?



We explore 10 years of contract data, and provide an analysis of the impact of short-term continuing resolutions on contract spending.



Questions & Answers - Submit your questions via GoToWebinar platform



Amy Edwards

Deputy Assistant Secretary,
Accounting Policy & Financial
Transparency Office of the
Fiscal Assistant Secretary,
Department of the Treasury



Nick Hart

CEO, Data Coalition



**Rebecca
Hutchinson**

Big Data Lead, Census
Bureau, Department of
Commerce



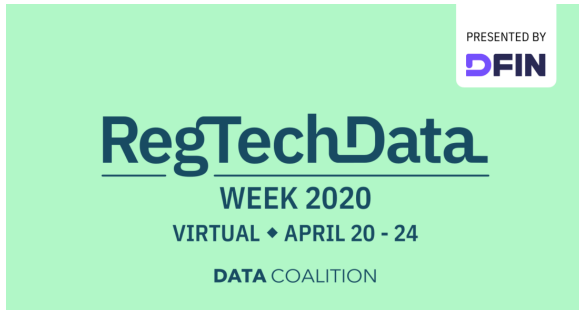
Neil Jacobs

Acting Administrator,
National Oceanic and
Atmospheric
Administration

Upcoming Events



Realizing the Benefits of the Financial
Transparency Act
April 8, 2020



RegTech Data Week
April 20 – April 24, 2020

Thank you for participating!

Visit datacoalition.org

Sign up for newsletter!

DATA COALITION